

Large output RO systems for fishing industry

RELIABILITY, OPTIMIZED DESIGN & EFFICIENCY in desalination RO plants

Gefico is a leading company in desalination technologies and water treatment solutions. Taking advantage of its more than 40 years of experience in the fishing vessels industry, Gefico has developed large RO systems to fulfil the strict demands of this sector.

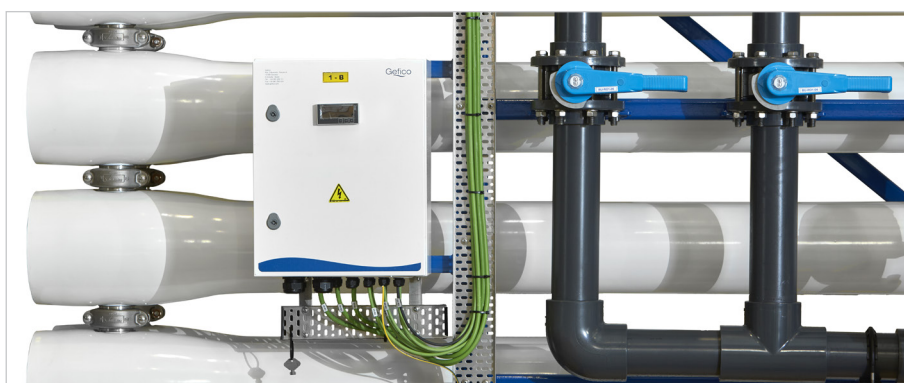
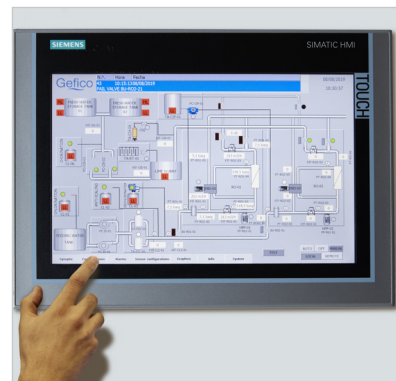
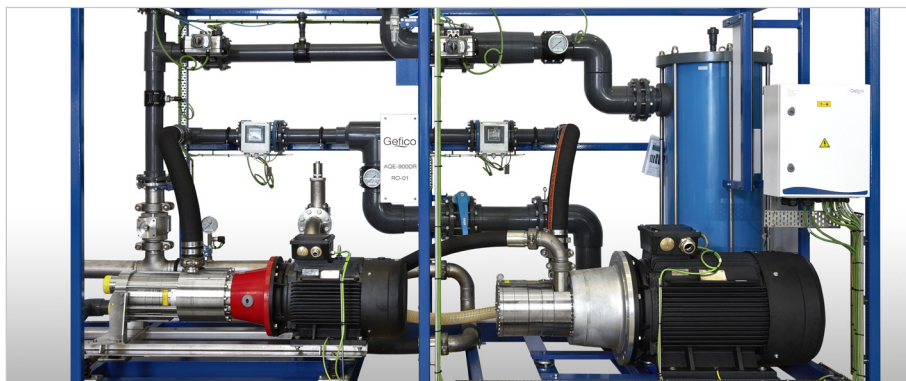


Key Features

- **Energy efficiency:** Danfoss Axial piston high-pressure pumps and iSave ERD save up to 60% on energy cost compared to non-ERD systems.
- **Double pass** systems that can produce **freshwater** or **technical water**.
- **Reliability** and fully **autonomous** operation (PLC and HMI touch screen).
- **Resistant and long-lasting:** components of top-quality brands and materials.
- **Complete package** covering the process from water feed to post-treatment.

Key Benefits

- Worldwide **service 24/7** and spare parts from stock.
- **Operation/Maintenance:** automatic operation, accessible components for an easy maintenance.
- Simple and **compact installation:** optimized and modular design for a simple installation and minimal footprint.
- Complete control and **monitoring** of the **operational parameters** through ethernet/IP & Modbus TCP protocol.
- Production capacity fulfilled following **rigorous design** parameters.



RO unit	Production	Recovery	Membranes	Specific Power Consumption	HP Pump + iSave Module	RO Module
Model	m ³ /d	%	Qty	kWh/m ³	LxWxH in mm	LxWxH in mm
AQE-1000DR	1000	49%	60	2,20	2000x2250x1200	7200x1730x2100
AQE-1500DR	1500	49%	90	2,22	2400x2250x1400	7200x2080x2100
AQE-2000DR	2000	48%	120	2,23	3500x2250x1920	7200x2300x2100
AQE-2500DR	2500	50%	144	2,27	3500x2250x1920	7200x2300x2300

Global Leaders in Water Treatment Solutions



... since 1979

Our Markets:

